



General Information



★ ★ ★ ★ ★ ★ ★ ★ ★ ★

Professional Business Software

Trusted Solutions since 1994

★ ★ ★ ★ ★ ★ ★ ★ ★ ★

Company Profile

Product Catalogue

Product Features

CONTENTS

Company Profile

Introduction	3
Our Customers	4
Our Vision.....	5
Our Team	6
Your Benefits.....	7

Product Catalogue

The Modules of JS Systems	8
Financial Management Reporting.....	10
Cash Flow Control	12
Sales to Cash	14
Customer Relationship Management.....	16
Procurement to Payment	18
Warehouse Control.....	20
Asset Management	22
High Definition Costing	24
Manufacturing	26
Tax Compliance	28
Employee Attendance.....	30
Payroll Automation	32

Product Features

Modern User Interface	34
Advanced Security and Reliability.....	36
Future Proof Design	38



JS Systems provides customized business software solutions and implementation assistance since 1994. With more than 150 multi-national and national companies using our software we have build an extensive collection with best-of-breed modules. Our experienced system engineers will put on a finishing touch and customization to provide you with the best value added system for your company.

Why should you computerize your company's operations? While increased efficiency will yield some short-term cost benefits, this is usually not the main goal. The increased control and reduction in mistakes will allow your company to grow when opportunities arise and keep existing business where competitors fail.

JS Systems specializes in flexible and customizable software. Our extensive experience in Indonesia, since 1994, allows us to select best practice solutions for your company. Customization is always an option, whether you decide to custom-fit a solution to your company or need additions for your growing company later-on.

Software alone is never a solution. JS Systems provides start-up support, documentation and training for both direct users and ICT personal. Start-up support guarantees that the software is useable in your company and customizations are only considered complete after you receive three months of consecutive correct reporting from the system. JS Systems not just sells you software, we guarantee a working solution!

Our Customers

More than 150 multi-national and national companies use successful solutions from JS Systems:



Motor Wheel Manufacturing



Woodworking



Cigar Manufacturing



Sorbitol Manufacturing



Electronics Manufacturing



Cargo

Some of our customers are using the system since 1994:

- Importers
- Branded Distributors
- Agents
- Import/Export Trading
- Clinic & Spa
- School
- Cosmetics Manufacturing
- Chemical Manufacturing
- Electronics Manufacturing
- Tobacco Industry
- Automobile Industry
- Health Care
- Hospitality
- Cargo & Forwarders
- Newspaper and Offset Printing
- Construction
- Real Estate
- Wood Working

Our Vision

Software from JS Systems makes your company administration more effective and efficient, thus allowing your company to grow effortlessly. The solution provides timely and consistent management information, e.g. finance reporting, order status, inventory levels, employee attendance, etc.

Standard packages only provide common functionality without providing integrated rule checking and management reporting. A tailor made software solution can be risky and costly. JS Systems has an extensive range of customizable modules that can be implemented fast and cost-effective while including fixed-price customizations and additions. Therefore we not only give a technical guarantee for our software, but actually guarantee that our software solution will be implemented successfully in your company.

JS Systems creates software that is:

- Based on your business processes
- Flexible
- Fully integrated
- A proven technical solution

Our Team

The JS Systems team consists of about 20 professionals with backgrounds varying from software development and ITC management to registered accountant, production control and project management.



The team is lead by Ir. Jan Sturm, who has more than 20 years experience in information technology project. He graduated from the Delft University of Technology majoring in Management of Datacenters. In the Netherlands he has implemented systems for a multinational insurance company and worked on the research and development department of the nations largest accounting software provider. Ir. Jan Sturm has developed accounting software with an Indonesian accounting firm and now for more than 10 years manages JS Systems.



Our organization chart reflects our vision:

- Project Development and Maintenance are separate divisions to maximize our service during the complete life-cycle of the software
- The separate Project Administration (part of General Affairs) provides independent status reporting
- A continued investment in Research and Development ensures timely technological advancements

Our experienced multidisciplinary team has the knowledge to make your software project a success!

Your Benefits

The products of JS Systems can be combined to form many types of business software, with specialized implementation assistance by our team. However we will always keep in mind these aims:

- Improve efficiency
- Enforce business rules consistently, in other words: improve consistency and control
- Provide management with the necessary reports or tools to make better decisions
- Confirm to legal and stakeholder requirements

Improve efficiency. Customization allows for self-service data-entry forms and efficient exception reporting. Also reports are adjusted according to the company's standards eliminating the need to periodically create management reports manually. Larger customers have reported an increase of up to eight times the number of transactions while maintaining or actually reducing the number of administration staff.

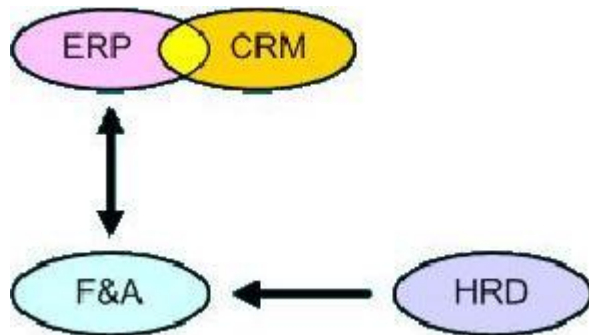
Enforce business rules. Again customization and tailor-made add-ons are the key. Based on the initial discussion and survey we select the best modules for your company. Each module has several best-of-breed configurations with the applicable business rules installed. Our system engineer will then implement all the additional business rules from your company, thus improving the quality and timeliness of the data.

Management reports. All reports are always up-to-date using our 'intelligent intermediate result storage' technique. Standard reports can be exported in several formats allowing further analyses with a spreadsheet or other tool. Also all modules include our easy-to-use report generator with which you can make instant reports using a drag-and-drop interface. This is very important for summary reports that may vary from month to month based on requests from the management.

Confirm to legal and stakeholder requirements. The applicable modules provide all required reports for tax, social insurance, etc. and in some cases can directly link to the appropriate software. Multi-format financial reports are suitable for management, corporate reporting and investors.

The modules of JS Systems

JS Systems has 41 modules which have been grouped in 4 major areas.



The four major areas are:

- F&A - Finance & Accounting
- ERP - Enterprise Resource Planning
- CRM - Customer Relationship Management
- HRD - Human Resources Development

In this product catalogue the modules are grouped by function:

- | | |
|------------------------------------|---------------------------|
| • Financial Management Reporting | • Asset Management |
| • Cash Flow Control | • High Definition Costing |
| • Sales to Cash | • Manufacturing |
| • Customer Relationship Management | • Tax Compliance |
| • Procurement to Payment | • Employee Attendance |
| • Warehouse Control | • Payroll Automation |

Finance & Accounting

This is the heart of the administration department and information from several other departments are collected, compared, corrected if necessary and a single consistent picture of the company is created, the monthly financial report. Though many companies offer general ledger software, JS Systems goes much further. Customized data entry systems allow each department self-service entering of data and exception reporting provides the means for business rule checking and control.

Enterprise Resource Planning

An ERP system is often the hardest to implement because it requires many different departments to coordinate and work together. Suddenly a department may become dependent on the correct and timely data-entry of another department, also corrections cannot be 'hidden', but are shown as transactions and subject to change management. JS Systems softens the shock by customizing the data-entry forms and reports to resemble the existing reports in each department. Also our multi-disciplinary system engineers understand your production process. During implementation we will always keep in mind the main reasons to have an ERP system: optimize resources in production, including reducing inventories and maintaining order schedules.

Customer Relationship Management

Though customer relationship management has a major functional overlap with the ERP modules, it has its own goals: increasing sales and improving the quality of service to the customer. Most modules are not as stringent as the ERP modules but focus on analyses and sharing of informal data.

Human Resource Development

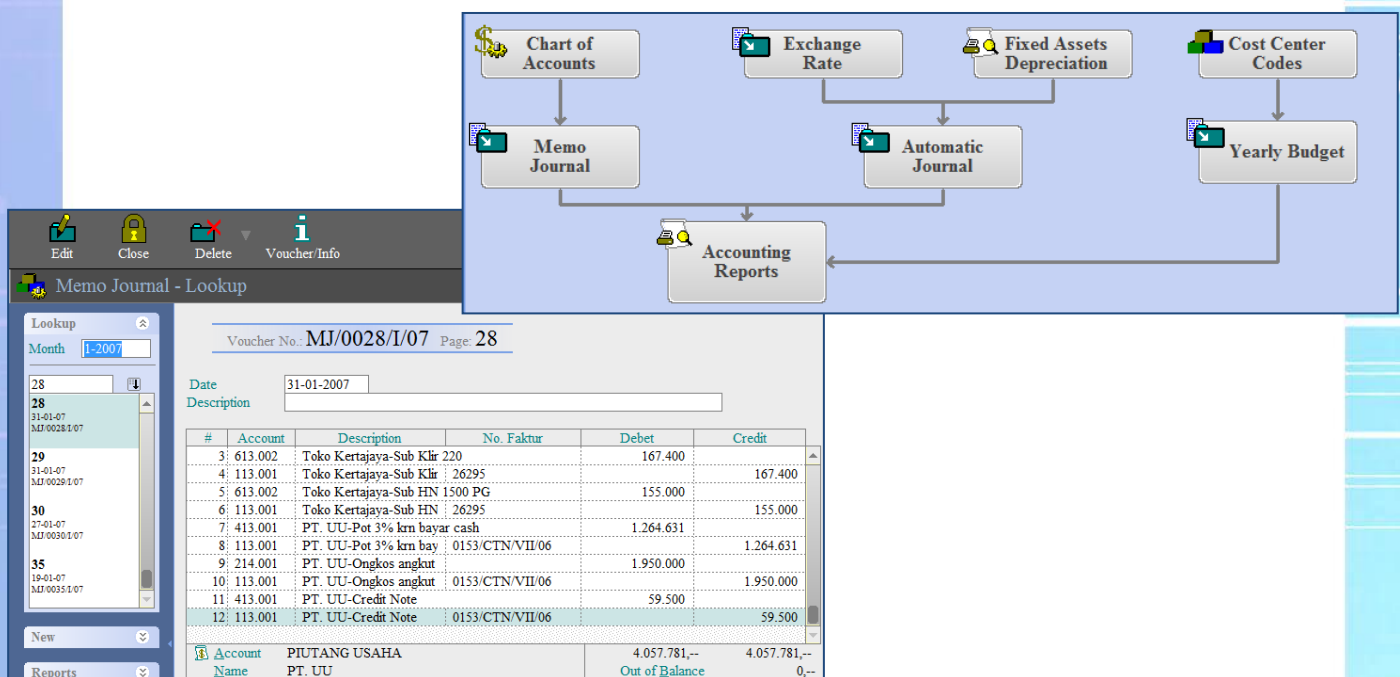
The modules in this group cover all administrative functions in the HR department from recruitment and employee data till attendance control, payroll and tax. This allows the HR department to focus better on their main goal: the development of the human factor. Also more subjective decisions can be made based on quick analyses of the employee and candidate data.

A computerized system can speed up and simplify the monthly accounting cycle because all information is stored in a single location and can easily be accessed for cross-checking and corrections. During this process all reports, including the balance sheet and income statement are always up-to-date.

All reports, including the balance sheet and income statement are always up-to-date

JS Systems has a fundamental accounting system that is suitable for all types of companies. It includes clear and efficient procedures for immediate results. During the start-up phase JS Systems will assist in analyzing the existing accounting system, enter the opening balance and explain in written form how to enter all types of transactions.

To improve control and avoid double entry of data the basic accounting system is integrated with several sub-ledger systems, e.g. petty cash, bank reconsolidating, account payable/account receivable, fixed assets, inventory costing, production costing and others as required. The Finance & Accounting modules can also automatically obtain data from the 'Enterprise Resource Planning' and 'Human Resource Development' modules.



General Ledger

Budgeting

Purchase & Sales Data Entry

Consolidation

General Ledger.

The General Ledger module contains all functionality necessary to computerize your accounting division. You can create and maintain your accounts yourself and enter transaction in multiple months simultaneously. The reports are quickly available and always up-to-date because of an 'Intelligent Intermediate Result Storage' technique.

Apart from the usual reports like ledger, balance sheet and income statement, it is also possible to create several check lists to verify the transactions that make up each number in a summary. To enhance the integrity of your data and save duplicate work this module can be integrated with other modules, like Fixed Assets & Recurring Transaction, Account Payable / Account Receivable, Inventory Costing, and Production Costing.

Purchase and Sales Data Entry Automation

This module simplifies the process of entering purchase and sales data. An operator fills out a customized form that is more efficient and less error prone than entering the data as debit/credit only.

This module includes the option to print invoices and purchase vouchers directly. The 'Purchase and Sales Data Entry Automation Module' is an integral part of the general ledger module.

Budgeting

Multiple budgets including revision data can be imported from a spreadsheet or entered manually in the system. Many accounting reports have the option to compare actual values against the budget.

If a new transaction goes over the budget a reminder or approval request can be launched automatically.

Consolidation

For multiple companies or multiple locations the financial data can be consolidated into one financial statement without losing track of details such as account receivables by customer and inventory levels. An automatic system for elimination of intra-company sales and receivables is included as well as reports for comparing the performance of each branch office.

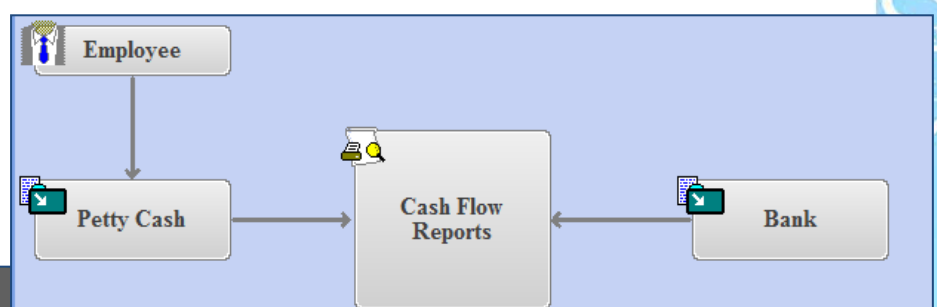
A proper cash flow control is vital to all companies. It combines real transactions from petty cash and bank with an outlook of payments and receipts due based on data entered in the 'Sales to Cash' and 'Procurement to Payment' modules.

Using the JS Systems software it is easy to create new petty cash or bank books. Just create a new account and indicate that it is either a cash or bank account and the system will immediately add the required vouchers.

Foreign currency transactions are fully supported for petty cash and bank accounts. Transactions are automatically converted using the daily or monthly exchange rate. Back dated cheques are supported in a variety of ways. You can choose the method that matches your company's needs closest.

Foreign currency transactions are fully supported... Back dated cheques are supported in a variety of ways.

The finance modules are fully integrated with the accounting system.



Bank Mandiri - Daily Bank Mandiri Report					
Start Date Until Date		01-01-2007 31-01-2007		BBK BBM GIRO.M	
Date	Voucher	Account	Remark	Total	RECEIVED Tunai
03-01-07	BBM/001/W07	112.999	Setoran dari BCA	7.500.000,--	7.500.000,--
03-01-07	BBM/033/W07	113.001	Baru Jaya	14.504.000,--	38.736.500,--
		113.001	Baru Jaya	12.127.500,--	
		113.001	Baru Jaya	12.105.000,--	
03-01-07	BBK/109/W07	628.901	Perbaikan ruang meeting		2.100.000,--
03-01-07	BBK/117/W07	212.201	Bongkar pasang kusen pintu, kaca & kunci ruang meeting	(2.100.000,--)	
		212.201	Pencairan Bpk. Yanto	(14.383.300,--)	21.385.300,--
		212.201	Pencairan Bp. Yanto	(3.703.000,--)	
		212.201	UD. Sinar	(3.299.000,--)	
		212.201	Pencairan UD Sinar		
		212.201	Pencairan UD Sinar		

Cash Transactions

Transactions can be entered efficiently and safely. The system will protect against using wrong account numbers, entry date, etc. A supervisor can approve or close the account balance for a date preventing further changes.

The data entry screen automatically adjusts for foreign currency accounts, advising when an exchange rate is necessary.

A temporary cash voucher is used when a transaction is not immediately completed. These temporary vouchers are shown in the daily cash flow reports.

Bank Transactions

Transactions for the bank accounts can be entered daily based on the bank receipt and disbursement vouchers. After receiving a bank statement you can reconcile the bank report and enter additional data such as administration cost.

The data entry screen automatically adjusts for foreign currency accounts and accounts with back-dated cheque facility. A separate voucher is used for receiving cheques or bounced cheques (depending on the default method chosen).

Online Banking

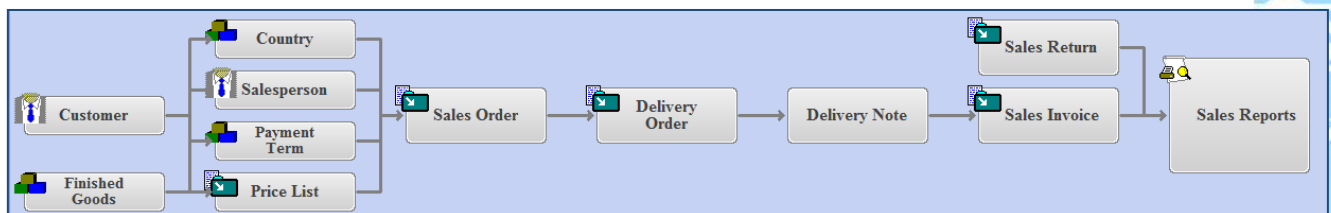
Several banks have created the possibility to obtain a bank statement and transfer funds electronically through the Internet. JS Systems cooperates with 'Klik BCA', 'Klik BCA Bisnis' and 'Lippo Online' to give you the option to automatically transfer a bank statement to the general ledger.

The consolidation between the bank statement and general ledger entries is performed automatically and any discrepancies are indicated clearly. From the same screen it is possible to enter the missing Bank Receipt and Bank Disbursement Vouchers.

After a sales order is stored, the system will either automatically create a delivery order on the designated delivery date(s) or alternatively the operator creates the delivery orders. Both Delivery Orders and their confirmation by the warehouse or customer are stored permanently in the computer system. This system gives you the opportunity to both analyze and improve on the timeliness of orders.

**This system gives you the opportunity to
both analyze and improve on the
timeliness of orders.**

These modules fully integrate with the Production Planning module for order driven and batch produced items. It also integrates with the Finance & Accounting modules for further processing of the invoices.



Output

Refresh

View

Zoom

Sales Reports - Register Sales Per Customer - January 2007

Main

Menu

Daily Sales Register
Monthly Register Sales Per
Monthly Register Sales Per
Monthly Register Sales Return Per C
Register Sales Return Per C

Month
Customer

1-2007
0001

Jaya Sentosa

Date	No. SJ	No Faktur	Name Customer	Code	Name Product	Qty	Price	Amount
04-01-07	0003/GLN/VII/06	026369	0001 Jaya Sentosa	FG003	Cylinder White Label 19 Ltr.	300	2.250, --	675.000, --
								675.000, --
12-01-07	0013/GLN/VII/06	026446	0001 Jaya Sentosa	FG003	Cylinder White Label 19 Ltr.	300	2.250, --	675.000, --
								675.000, --
21-01-07	026526	026526	0001 Jaya Sentosa	FG003	Cylinder White Label 19 Ltr.	37	2.250, --	83.250, --
				FG005	Cylinder OxyBest 19 Ltr. 1st Choice	103	2.250, --	231.750, --
				FG007	Cylinder OxyBest 19 Ltr. 3rd Choice	110	2.250, --	247.500, --
								562.500, --
21-01-07	026528	026528	0001 Jaya Sentosa	FG019	White Label 250 ML	50	8.100, --	405.000, --
								405.000, --
28-01-07	026579	026579	0001 Jaya Sentosa					0, --
					TOTAL			2.317.500, --

Product Catalogue

Sales to Cash

Sales Order Processing & Billing

Accounts Receivable

Sales Realization & Distribution

Sales Forecast

Sales Quotation & Profitability Analyses

Sales Order Processing

When creating the sales order you can choose from a variety of invoicing options (subject to security limitations). An invoice can be automatically created on confirmation of the order, on shipment or on receipt of goods. Invoicing can either be instant, periodically or based on a credit limit. The preset invoicing options per customer can be modified only by an operator with sufficient rights in order to better control invoicing practices.

Sales Realization & Distribution

This module covers more complex shipping and distribution options such as selection of the trucking company, shipping agent and shipment routes based on availability, pricing, and customer preference. Continuous revisions as well as last minute changes by logistic are possible.

Sales Quotation & Realization

Before making a sales quotation many factors may have to be evaluated such as: raw material cost, labour, machine cost, shipping cost, packing cost, interest on delayed payment, etc. This module can automatically create a profitability analysis based on the information entered by the sales person. The quotation is then approved directly or sends to the supervisor for further approval.

Sales Forecast

The yearly sales business plan can be entered into the system as well as the monthly/weekly sales outlook. All data can be compared to the actual sales figures as well as earlier revisions.

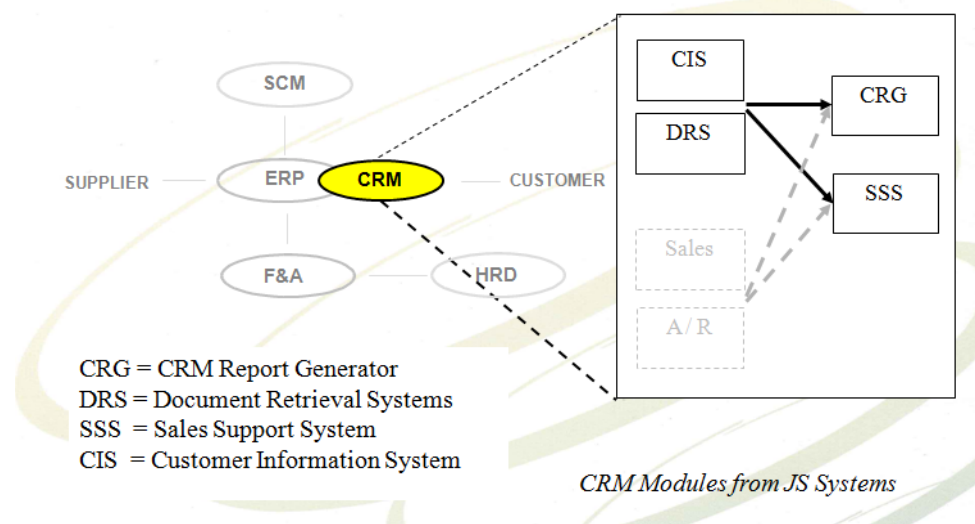
Account Receivable

The AR module can record all your in- and outgoing invoices and consequently produce instant information about all payments due and overdue per customer. Since it is integrated with the 'General Ledger' module automatically all reports will be the same between modules and do not need to be consolidated. Advance payments can also be stored and are automatically matched to the invoice. If there is a balance in a foreign currency, each month the computer automatically corrects the exchange rate.

Customer Relationship management is all about improving the bottom line. Knowing your customers gives you the means to create a unique and profitable relationship with each customer.

Treating each customer individually allows you formulate a proper and cost-effective strategy for optimizing the profits for each customer and thus optimizing your total profits. This however requires that the correct data is available at each 'touch point'. The sales support system provides your sales department, help desk and other staff with the relevant data when they are interacting with a customer.

Other modules allow you to analyze all the data that you have collected and support marketing campaigns and sales forecasting.



Customer - Lookup

Lookup

Jaya Sentosa
 Jakarta, UD.
 0016

Jaya Motor
 0031

Jaya Sentosa
 0001

Jaya, Baru
 0040

New

Search

Settings

Details

Customer: 0001 Name: Jaya Sentosa

Address: Jl. Tenggilis Tengah I/48 (Q-10)

City: Surabaya

Telephone: 031 - 848 0307

Due Date: 30 Days

Salesman:

Credit Limit: 20.000.000

Product Catalogue

Customer Relationship Management

Customer Information System

CRM Report Generator

Document Retrieval System

Sales Support System

Customer Information System

This module is designed to store all relevant customer information, such as: name, address, telephone number, and so on. On top of that it is possible to design additional screens to store almost any information regarding a customer. The data can either be historical (e.g. confirmed orders per customer) or multiple screens (e.g. multiple contact persons per customer).

Document Retrieval System

This module assists the sales department by storing and retrieving letters and other documents per customer. This part of the system is very easy to operate as it follows the standard windows procedures.

CRM Report Generator

The report generator allows you to create reports and obtain data in a flexible way. The reports can be applied to sales data, customer list or a subset of all customers. Furthermore the order in which the names appear can be altered.

Sales Support System

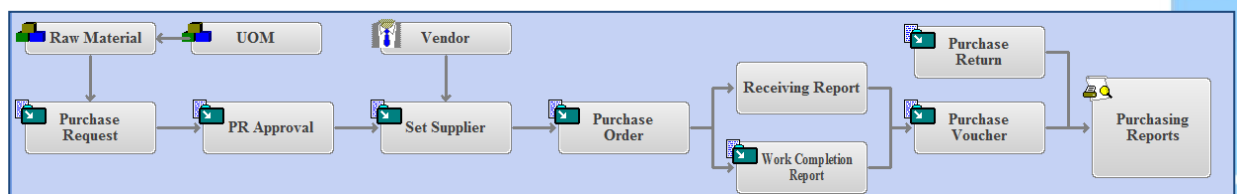
This system instantly creates proposals for customers with a complete cost prediction. It is a tool for communication between various expert needed to evaluate the cost per proposal and the actual staff that create a proposal.

JS Systems software will monitor the entire process of ordering and receipt of raw material and other items. The user rights and business rules are programmed in the system and enforced uniformly.

A computerized system forces a more consistent and transparent ordering process. Furthermore it aids purchasing decisions by providing price history and performance indicators about suppliers, such as timeliness of delivery.

A computerized system forces a more consistent and transparent ordering process.

A computerized purchasing system prevents double ordering and can reduce stock levels.



Purchase Request - Purchase Request									
Department		100	PABRIK / PLANT						
Until Date		26-10-2009							
[Status]									
No.	Date	PR No.	Item Code	Description	Qty.	Usage	Status	Priority	
1.	23-06-2009	PR/100/0001/M/09	PM018	White Label Box for 1,5 Ltr Bottle	1.000	Lembar 3. Fixed Asset	Request	1. Normal	
2.			PM019	White Label Box for 1,5 Ltr - Special Order	500	Lembar 3. Fixed Asset	Request	1. Normal	
3.	03-08-2009	PR/100/0001/M/09	CL004	Empty 19 Ltr Cylinder - OxyBest	100	Pcs 2. Supplies	Request	1. Normal	
4.	01-09-2009	PR/100/0001/X/09	PM003	Special Promotion Box	1	Lembar 3. Fixed Asset	Request	2. Urgent	
5.			PM004	Box for Oxyfine 220 ml	2	Lembar 3. Fixed Asset	Request	2. Urgent	
6.	11-09-2009	PR/100/0002/X/09	CL001	Empty 19 Ltr Cylinder - Old Model I	1	Pcs 2. Supplies	Request	1. Normal	
7.			CL003	Empty 19 Ltr Cylinder - White Label	3	Pcs 2. Supplies	Request	1. Normal	
8.	01-10-2009	PR/100/0001/X/09	CL001	Empty 19 Ltr Cylinder - Old Model I	1	Pcs 2. Supplies	Request	1. Normal	
9.			CL003	Empty 19 Ltr Cylinder - White Label	3	Pcs 2. Supplies	Request	1. Normal	
10.	02-10-2009	PR/100/0002/X/09	CL001	Empty 19 Ltr Cylinder - Old Model I	1	Pcs 2. Supplies	Request	1. Normal	
11.			CL003	Empty 19 Ltr Cylinder - White Label	3	Pcs 2. Supplies	Request	1. Normal	
12.	03-10-2009	PR/100/0003/X/09	CL001	Empty 19 Ltr Cylinder - Old Model I	1	Pcs 2. Supplies	Request	1. Normal	

Purchase Order Processing

Accounts Payable

Purchase Document Flow Automation

Purchase Order Processing

The system keeps a database of purchase orders that is a basis for the receipt of purchased items. A warning can be issued if some items are overdue or items are received without a prior purchase order. After receipt of all relevant information, such as purchase order, receiving report and, if applicable, the supplier's invoice a purchase voucher will be created automatically. The regular ordering, receipt and posting of purchases can be processed fully automatic and the manual control can be limited to special cases.

The Purchase Order Processing module fully integrates with the Inventory Control module such that in one report it is possible to see the actual inventory and when the inventory will be replenished. It also integrates with the Finance & Accounting modules for further processing of the purchase vouchers.

Purchase Document Flow Automation

This module is an addition to the 'Purchase Order Processing' module. The data entry screens will be tailor-made for more efficiency in the purchasing department and other departments that are involved.

Account Payable

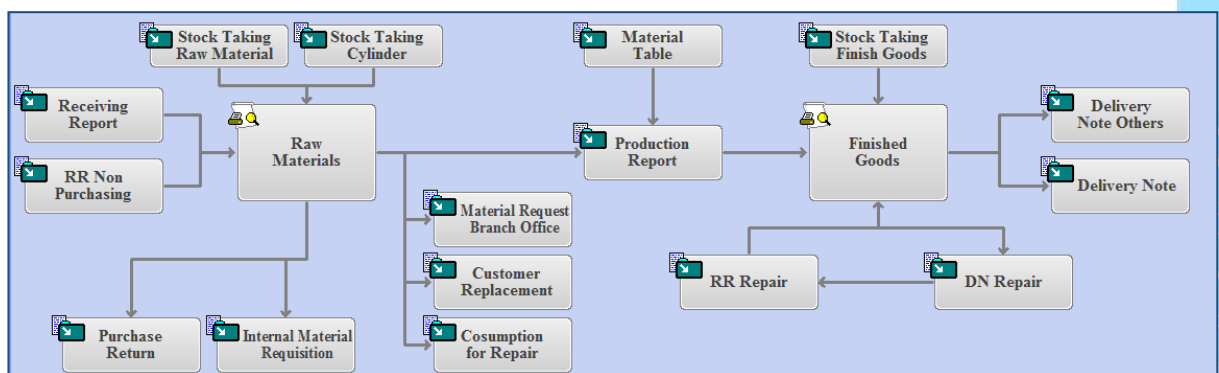
The AP module can record all your incoming invoices and consequently produce instant information about all payments due and overdue per supplier. Where applicable, invoices are automatically matched to the purchase order.

Since it is integrated with the 'General Ledger' module automatically all reports will be the same between modules and do not need to be consolidated. If there is a balance in a foreign currency, each month the computer automatically corrects the exchange rate.

The warehouse control modules provide an easy to use system for recording incoming and outgoing goods. Incoming goods are checked against purchase orders, consumption can be limited to a bill of material and delivery orders are checked against outstanding sales orders.

The warehouse control modules are very flexible in the type of data that is stored for each item. All of the following scenarios are supported:

- Some items are measured in two units of measurement without a fixed relation between the two. E.g. wooden planks are both measured in pallets and cubic meters; but not every pallet contains the same amount of wood planks.
- Some items can be measured in two or more units of measurement, however a multiplier can be set for each item. E.g. One box containing five pieces.
- Some items can be substituted by an equivalent item. E.g. a car part 1 from brand A is identical to part 2 of brand B.
- Several items together form a set and is traded as such. E.g. a stationery set, consisting of a pen, pencil and eraser, is sold at a reduced price.
- Some items occur in many sizes, which cannot efficiently be enumerated. E.g. wooden planks can have many different sizes; reporting should report all the sizes currently available and summarize in cubic meter.
- Each item is considered unique and has a serial number. E.g. each car has a unique number-plate.
- Some items have an expire date. E.g. canned food.



Product Catalogue

Warehouse Control

Inventory Control

Sales & Inventory for Distributor

Inventory Control' Module

This module stores information regarding the location of raw materials and finished products. Multiple location codes can be defined not only for actual warehouses but also for items stored at customer/supplier locations. All inventory reports contain up-to-date information about the current level of stock.

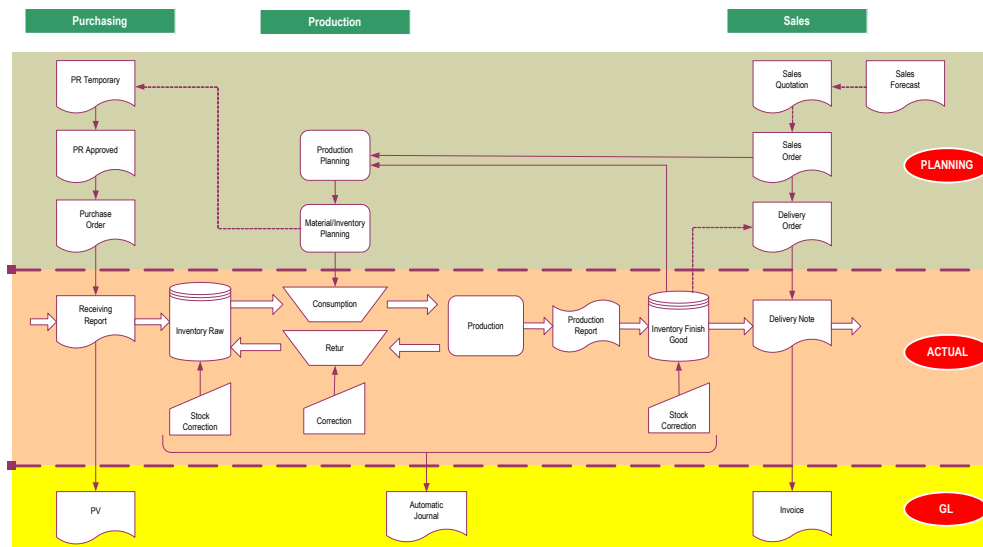
Sales & Inventory for Distributor

This module is created especially for distributors and agents. It includes all necessary vouchers and reports for inventory control including consignment and traveling salesman.

Finished Goods - Finished goods report for the month 1-2007													
Month: 1-2007													
Item Code	Description	UOM	Saldo Awal	Produksi	Repair	Retur	Kirim	QC	Repair2	Lain-2	Adjustment	Saldo Akhir	
FG001	First Aid Oxygen Can 200 ml	Dos	2									2	,00
FG002	Cylinder OxyFine 19 Ltr.	GLN	418				- 504				95	9	,00
FG003	Cylinder White Label 19 Ltr.	GLN	188	3.978		107	- 8.182				4.210	321	,00
FG005	Cylinder OxyBest 19 Ltr. 1st Choice	Pos.	0	344			- 259					85	,00
FG007	Cylinder OxyBest 19 Ltr. 3rd Choice	Pos.	0	211			- 110					101	,00
FG009	Reject 220 ml	Kg	0				- 32					- 32	,00
FG010	Reject 250 ml	Kg	0				- 8					- 8	,00
FG011	OxyFine 220 ml	Dos	2.590	77.887	905		- 77.186		- 952		- 1.295	1.929	,00
FG012	OxySuper 220ml	Dos	1.502	1.816	68	23	- 2.308		- 78		- 751	276	,00
FG013	OxyFine 250 ml	Dos	4		2				- 2		- 2	2	,00
FG014	OxyFine 330 ml	Dos	60								- 30	30	,00
FG015	OxyFine 600 ml	Dos	4.266	5.808	12		- 7.200		- 13		- 2.133	740	,00
FG016	OxyFine 1.5 Ltr.	Dos	4.520	2.513	11		- 3.825		- 11		- 2.260	948	,00
FG017	OxySuper 1.5 Ltr.	Dos	370	2.389	2		- 2.491		- 2		- 15	283	,00
FG018	White Label 220 ml	Dos	4.356	19.188	382	8	- 18.651		- 405		- 3.795	1.083	,00
FG019	White Label 250 ML	Dos	2.086	20.289	434	258	- 18.975		- 466		- 2.143	1.483	,00
FG020	White Label 330 ml.	Dos	642	1.036	3	114	- 275		- 3	- 151	- 311	1.055	,00
FG021	White Label 600 ml.	Dos	1.252	7.866	10	97	- 7.901		- 11		- 616	697	,00
FG022	White Label 1.5 Ltr.	Dos	2.038		3		- 675		- 3		- 1.019	444	,00
FG023	Special Order 1.5 Ltr.	Dos	4.402	5.366	12	66	- 7.073		- 11		- 2.236	526	,00
FG024	OxyBest 220 ml.	Dos	890	5.651	234	278	- 6.404		- 254		- 293	802	,00
FG025	OxyBest 600 ml.	Dos	982	1.696	6		- 1.800				- 491	385	,00
FG026	OxyBest 1.5 Ltr. 1st Choice	Dos	0	2.897	1		- 2.659		- 1			238	,00
FG027	OxyBest 1.5 Ltr. 2nd Choice	Dos	192	2.621	4		- 703		- 7		- 2.107	0	,00
FG028	Special Order 1 Ltr.	Lembar	0				- 2.301					- 2.301	,00
FG029	Special Order 220 ml.	Dos	2.586	89.179	1.745	854	- 69.703		- 1.859		- 15.640	7.162	,00
PM001	Empty Box	Lembar	0							- 10.000		- 10.000	,00
TOTAL			33.046	250.715	3.834	1.805	- 238.103	0	- 4.084	- 10.151	- 30.802	6.260	

The manufacturing process is supported by modules for both monitoring the actual output as well as assist in planning the production schedule and materials required. It is often referred to as the MRP (Manufacturing Resource Planning) system or in an integrated environment it becomes the ERP (Enterprise Resource Planning System).

With the correct implementation of the ERP modules large financial gains can be achieved through reduction of inventories and just-in-time production.



Production Control

Whether it be continuous, batch or order based production it is important to have up-to-date and accurate information about the current status of production and the long term efficiency. The Production Control module achieves both goals by formalizing production data and being a rapid communication to the proper levels of management.

The total production of an item may consist of many different steps or processes. This module is centered around the notion of distinct production processes that are initiated by a Process Order and finished with a Process Completion Slip. Each process transfers certain materials into (semi-) finished goods or advances an item towards a finished product.

All processes use resources such as labor, machine hours, raw materials, electricity, etc. that are also noted on the Process Completion Slip. Integrated with the Material Planning module this allows for reporting on efficiency as referred to a standard set in the Production Process database. This module should always be used in conjunction with the Inventory Control module.

Product Catalogue

Manufacturing

Material Planning

Production Planning

Production Control

Material Planning

The Material Planning module eliminates the manual process of creating a detailed B.O.M (Bill of Materials) for each order or batch that is scheduled. The computerized B.O.M is less error-prone and easier to update/modify since all changes are immediately reflected.

Each finished product that has been ordered is defined using processes and materials required to produce it. It is also possible to use sub-materials and sub-processes which in turn are defined elsewhere. Some processes can be executed in parallel where others are sequential. The minimum or optimal batch size per (sub) process is observed when creating a purchase suggestion for the raw materials required.

This module supports both continuous/batch production and customized-to-order production. It is easy to modify a product to the customers requirements as only the highest level of product definition has to be edited. All changes are immediately reflected in the B.O.M.

The Material Planning Module fully integrates with the Product Planning and Production Control modules, in which case a list of (sub) processes for each order can also be created. It also links to the Purchase Document Flow Automation module for automatic ordering of raw materials.

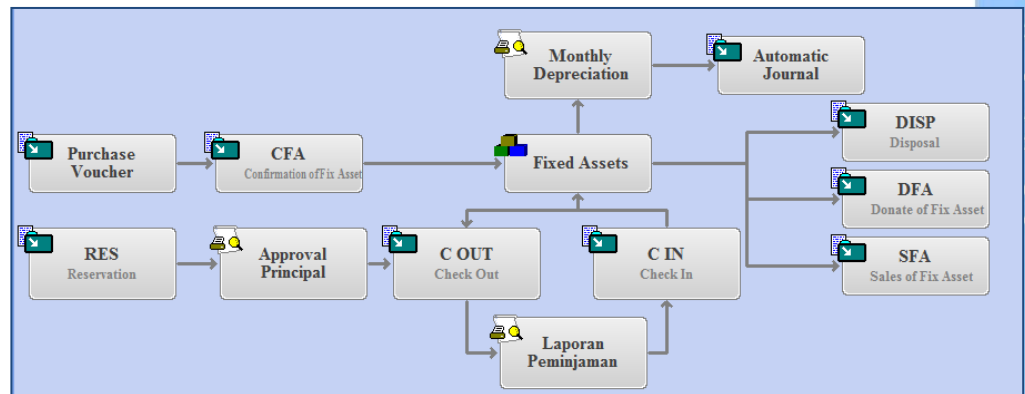
Production Planning

Production planning differs for order based, batch and continuous production methods. You can define multi-level and multi-stage production processes. Alternative production methods and customization of products are allowed. This system will calculate the optimum batch size and/or production schedule based on the sales forecast, sales confirmations, inventory levels and/or scheduled maintenance. The proposed production schedule will be updated instantly if new data becomes available. It can also be edited manually using a simple 'drag-and-drop' system.

Fixed assets are often regarded as a special case of inventory. They are placed in a certain location and some assets can be moved and borrowed. Because the assets are in use their value depreciates and they may require maintenance.

The fixed assets module automatically calculates and posts the monthly depreciation. In case of disposal or sales the rest value is calculated.

The maintenance management stores maintenance information and procedures. A warning can be issued when regular maintenance is required.



Fixed Assets Reports - Fixed Assets Ending Balance for January 2007

Month: 1-2007

[Account]

No.	Description	Purchased	Depr. Method	Costing	Purchase Value	Correction	Total Value	Acc. Depreciation	Book Value
	121.004 - Peralatan Pabrik				0, --	0, --	0, --	0, --	0, --
	121.005 - Inventaris Kantor								
000001	AC SPLIT MERK NATIONAL	31-12-98	2 Th		6.455.000, --	0, --	6.455.000, --	6.455.000, --	0, --
000002	AC SPLIT 2 PK	31-12-99	2 Th		3.500.000, --	0, --	3.500.000, --	3.500.000, --	0, --
000003	POMPA MONOFLOW AF 200	31-12-99	2 Th		1.000.000, --	0, --	1.000.000, --	1.000.000, --	0, --
000004	LAMPU + KABEL U/ GD GALLON BARU	31-12-01	2 Th		2.200.000, --	0, --	2.200.000, --	2.200.000, --	0, --
000005	MESIN FAX KX-FT87BX	31-12-01	2 Th		1.600.000, --	0, --	1.600.000, --	1.600.000, --	0, --
000006	PRINTER LX 300	31-12-01	2 Th		1.500.000, --	0, --	1.500.000, --	1.500.000, --	0, --
000007	AC NATIONAL 1 PK	31-12-02	2 Th		3.750.000, --	0, --	3.750.000, --	3.750.000, --	0, --
000008	UPS PROLINK 1000 VA	31-12-03	2 Th		1.560.000, --	0, --	1.560.000, --	1.560.000, --	0, --
000009	2 UNIT AC SPLIT CHANGHONG	31-12-04	2 Th		1.525.000, --	0, --	1.525.000, --	978.541,69	546.458,31
000010	AC CHANGHONG DI LAB	31-12-05	2 Th		8.025.000, --	0, --	8.025.000, --	4.547.500, --	3.477.500, --
000011	AC CHANGHONG DI RUANG PRODUKSI	31-12-05	2 Th		3.050.000, --	0, --	3.050.000, --	1.652.083,31	1.397.916,69
000012	SWAN PING - KURSI	31-12-05	2 Th		1.000.000, --	0, --	1.000.000, --	566.666,69	433.333,31
000013	KOMPUTER P4 - 2,86 GHZ	31-12-05	2 Th		3.800.000, --	0, --	3.800.000, --	2.153.333,31	1.646.666,69
000014	MEJA TULIS GRAND BEECH	31-12-05	2 Th		688.250, --	0, --	688.250, --	388.875, --	299.375, --

Fixed Assets

This module is an extension to the General Ledger module. It records fixed assets and calculates or reevaluates the depreciation scheme. Multiple depreciation schemes per item (like tax & internal) are possible. Also other kinds of recurring transactions, like rent, can be recorded and the corresponding monthly transactions will be processed and entered in the General Ledger automatically.

The following facilities are included in this module :

- Instant historical information about fixed assets and their depreciation schedule.
- The calculated depreciation is automatically transferred to the general ledger systems.
- Support multiple depreciation schemes for internal and external reporting.
- Depreciation schemes can be changed according to accounting requirements.

Supports both straight line and double declining depreciation.

Maintenance Management

Maintenance of assets is a complex but vital task for all organizations. This module helps to assert all recurring and preventive maintenance is executed on-time ensuring a minimum of down-time. It can also analyze repetitive maintenance issues.

Sufficient resources should be available for each maintenance, i.e. human resources, parts, external suppliers, etc. This module makes sure that resources are available for both planned as well as unplanned maintenance.

The 'Maintenance Management' module integrates with 'Fixed Assets', 'Purchasing', 'Inventory Control' and 'Production Planning' modules.

For manufacturing and service oriented companies the costing of the products or services sold is one the most essential and also the most complicated part of the financial reporting. The cost of goods manufactured and cost of goods sold determine to a large extent the monthly profit of the company.

Accountants strive to attain a costing method that is as accurate as possible and delivers a stable performance without unfairly profiting certain sales transactions. This way management and shareholders are best informed about the performance of each product, service and customer.

However the accuracy of manual systems can strongly reduced due to unreliable production data and time constraints. An automated and integrated costing system solves these problems and will give the management a better overview of the company.

An automated and integrated costing system ... will give the management a better overview of the company.

Inventory Costing

This module is designed to control your stock flow and to analyze your purchases, sales and inventory. At any time you get the latest information. This module calculates the cost of goods sold according to one of the following systems : (1) FIFO-First In First Out, (2) Monthly Average, (3) Moving Average.

A wide range of reports are available from product sub-ledgers until a gross profit summary. The inventory mutations can be further analyzed using the 'Supply Chain Management' modules.

All reports always contain the most up-to-date information. If a correction or back-dated purchase is entered all outgoing transaction will be reevaluated. The cost of goods sold / used is updated and reflects again the costing method used.

Product Catalogue

High Definition Costing

Inventory Costing

Production Costing

Project Costing

Cost Accounting

Production Costing

The production costing is adjusted to the system used in your company. It consists of a set of calculations, reports and journal entries based on production result and actual or purported consumption, labor and overhead cost.

The benefits of an automated production costing are: elimination of the need for complex and error-prone spreadsheet calculations, more detailed production costing calculations are possible than would be feasible manually and consistent and timely costing reports that tie in to the financial reports.

Cost Accounting

This module is used to separate your expenses per cost centre. In addition to analysis reports, it is also possible to create an income statement per product group or through other allocation systems.

Project Costing

This module will be created according to the specific requirements of your company. It is fully integrated with the general ledger and inventory control modules. The project costing module allocates material, labor, and overhead expenses to various end product.

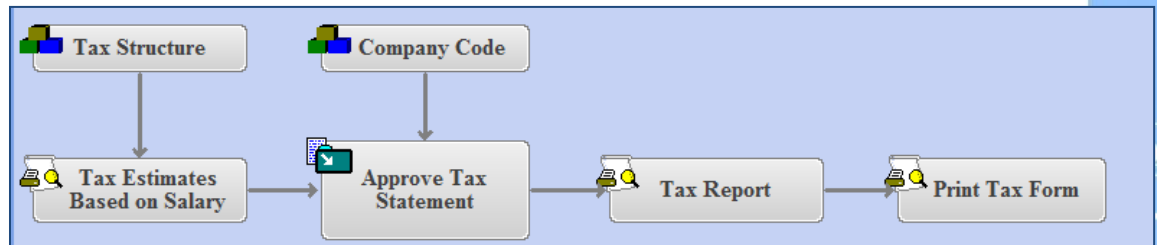
The following allocation schedule is proposed:

- Material consumption based on material requisition vouchers.
- Direct Labor Cost based on working hours report.
- Overhead Cost same as direct labor cost.

Other allocation schemes are possible and will be explored during the survey period.

Calculating taxes requires an extensive knowledge and practical experience with the Indonesian tax regulations. In some instances the way one tax is calculated can influence the outcome of another tax report. It is therefore vital to stay updated on the latest regulations.

A computerized system with the most up-to-date regulations gives peace of mind that you present correct and consistent information for the tax office.



Print Tax Form - Report

Output Refresh View Zoom

Main

- Menu
- Print Form 1721
- Print Form 1721-A
- Print Form 1721-A1
- Print Form PTKP
- Pegawai dengan SPT lebih
- Laporan Bulanan PPh 21

Perusahaan: JSS PT. Jaya Sentosa Sistemindo

Tahun: 2003

Dari #: 1

Sampai #: 1

LAMPIRAN I - A
SPT TAHUNAN
PAJAK PENGHASILAN PASAL 21

PENGHASILAN DAN PENGHITUNGAN PPh PASAL 21 PEGAWAI TETAP
ATAU PENERIMA PENSUN/TAHT/HT
TUNJANGAN HARI TUA / TABUNGAN HARI
TUA(THT) / JAMINAN HARI TUA (JHT)

*BERI TANDA X DALAM ☐ (KOTAK) YANG SESUAI

LBR 1: UNTUK KPP
LBR 2: UNTUK PEMOTONG PAJAK
LBR 3: UNTUK PEGAWAI

FORMULIR
1721-A1

TAHUN TAKWIM
2 0 0 3

NOMOR URUT : 1

NPWP PEMOTONG PAJAK : 1 2 3 4 5 6 7 8 9 0 1 2 0 0 1

NAMA PEMOTONG PAJAK : PT. Jaya Sentosa Sistemindo

ALAMAT PEMOTONG PAJAK : Jl. Tenggilis Tengah I/48 (Q-10), SURABAYA

NAMA PEGAWAI ATAU PENERIMA PENSUN/TAHT/HT : Susan

NPWP PEGAWAI ATAU PENERIMA PENSUN/TAHT/HT :

ALAMAT PEGAWAI ATAU PENERIMA PENSUN/TAHT/HT : Jl. Bratang Binangun, Surabaya

JABATAN : Manager Accounting

STATUS, JENIS KELAMIN DAN KARYAWAN ASING : ☐ KAWIN ☒ TIDAK KAWIN ☐ LOKAL ☒ PEKERJAAN ☐ KARYAWAN ASING

JUMLAH TANGGUGAN KELUARGA UNTUK PTKP : TK / 0

MASA PEROLEHAN PENGHASILAN : Januari 2003 SD Desember 2003

A. RINCIAN PENGHASILAN DAN PENGHITUNGAN PPh PASAL 21 SEBAGAI BERIKUT

PENGHASILAN BRUTO

	RUPIAH
1. GAJI/PENSUN/TAHT/HT	8.179.961,--
2. TUNJANGAN PPh	70.179,--
3. TUNJANGAN LAINNYA UANG LEMBUR, DSB	1.951.750,--

Product Catalogue

Tax Compliance

VAT Reporting

Income Tax Calculation

Withholding Tax Reporting

Company Tax Reporting

Income Tax Calculation

As with all taxes, calculating income tax requires extensive knowledge and practical experience with the Indonesian tax regulations. Especially when the company pays part or all of the employee income tax ('Tunjangan Pph 21') the monthly payments can no longer be calculated using a straight forward formula. Also to be taken in account are employees that leave early and thus may have paid too much income tax.

JS Systems has developed a special calculation method that reevaluates every month the income tax to prevent overpayment. It is possible to view on-screen or print-out the calculation used by the computer to get the maximum possible control over the payment of your income taxes.

It is possible to print the required yearly tax forms, such as 1721-A and 1721-A1 directly from this system. Other reports use the standard HRD report generator.

VAT Reporting

This module produces all the forms and reports required for the value added tax. Including VAT on purchases, sales, domestic, export/import, in Rupiah or a foreign currency. The monthly reports can be printed or submitted electronically through the e-PST program of the tax office.

Withholding Tax Reporting

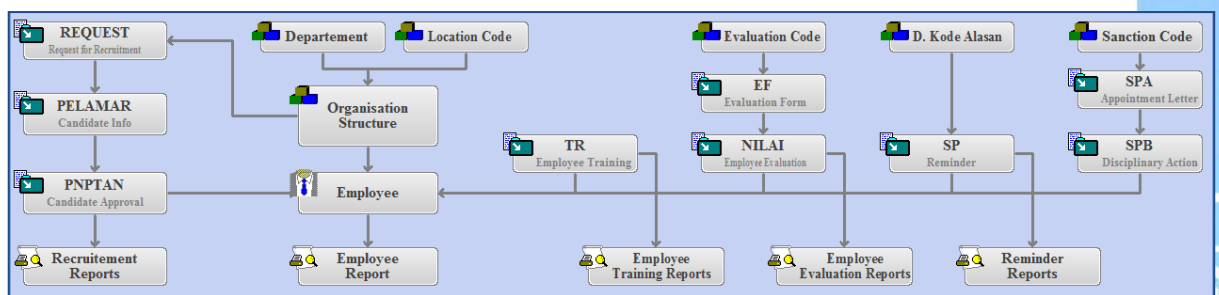
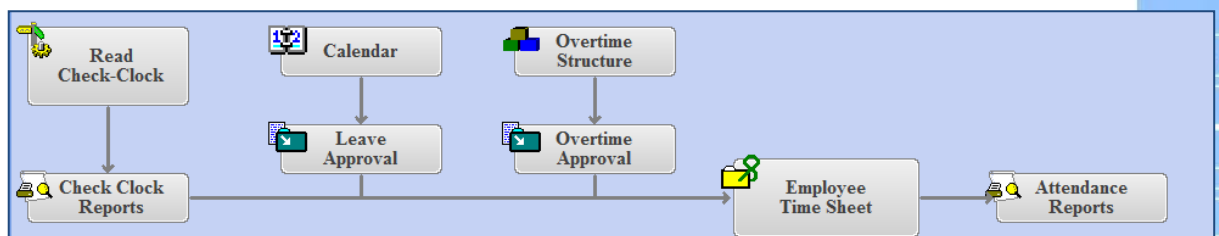
For certain products and services a withholding tax or final tax deduction is required. The system will be adjusted to the specific regulations and all taxes are automatically calculated and reported.

Company Tax Reporting

Monthly and yearly reporting forms are included in the system. The amount payable is calculated using the trial balance and settings in the chart of account. A manual adjustment is possible before approving and printing the reports.

The employee and attendance data should be as transparent as possible to make all employees feel they are treated fairly. The computerized systems stores data consistently, keeps historical data and can collect attendance data objectively using a fingerprint or card reader.

One of the strengths of the JS Systems HRD modules is the powerful and easy-to-use report generator. Manually gathering and categorizing hundreds of employee data just to create one report is a thing of the past. A few multiple choice menus help you to create statistical, monthly, yearly and other reports on all data stored in the system.



← Back

Employee Time

By Employee ▾

Current View ▾

Overview

Lookup

Employee: 030516001 Name: Agus
Month: 7-2003

Date	Type	In - Out	Hours	H.	OT	Overtime Details	Remark
Sun 29-06-03							
Mon 30-06-03	0. Non Shift	8:00 - 17:00	9:00	<input type="checkbox"/>	<input type="checkbox"/>	✗ Workday - No Overtime	
Tue 01-07-03	0. Non Shift	8:00 - 17:00	9:00	<input type="checkbox"/>	<input type="checkbox"/>	✗ Workday - No Overtime	
Wed 02-07-03	0. Non Shift	8:00 - 17:00	9:00	<input type="checkbox"/>	<input type="checkbox"/>	✗ Workday - No Overtime	
Thu 03-07-03	0. Non Shift	8:00 - 17:00	9:00	<input type="checkbox"/>	<input type="checkbox"/>	✗ Workday - No Overtime	
Fri 04-07-03	0. Non Shift	8:00 - 17:00	9:00	<input type="checkbox"/>	<input type="checkbox"/>	✗ Workday - No Overtime	
Sat 05-07-03				<input type="checkbox"/>			
Sun 06-07-03							
Mon 07-07-03	6. Leave Others	-		<input type="checkbox"/>			
Tue 08-07-03	0. Non Shift	8:00 - 17:00	9:00	<input type="checkbox"/>	<input type="checkbox"/>	✗ Workday - No Overtime	
Wed 09-07-03	0. Non Shift	8:00 - 17:00	9:00	<input type="checkbox"/>	<input type="checkbox"/>	✗ Workday - No Overtime	
Thu 10-07-03	0. Non Shift	8:00 - 17:00	9:00	<input type="checkbox"/>	<input type="checkbox"/>	✗ Workday - No Overtime	
Fri 11-07-03	0. Non Shift	8:00 - 17:00	9:00	<input type="checkbox"/>	<input type="checkbox"/>	✗ Workday - No Overtime	
Sat 12-07-03				<input type="checkbox"/>			
Sun 13-07-03							
Mon 14-07-03	0. Non Shift	8:00 - 17:00	9:00	<input type="checkbox"/>	<input type="checkbox"/>	✗ Workday - No Overtime	
Tue 15-07-03	0. Non Shift	8:00 - 17:00	9:00	<input type="checkbox"/>	<input type="checkbox"/>	✗ Workday - No Overtime	

Attendance Control

Employee Information System

Check Clock

Employee Information System

This module is designed to store all relevant data of an employee, such as: name, address, employment date, department, and so forth. In addition it is possible to design screens to store almost any kind of information regarding the employee. This data can be viewed historically (e.g. when did the employee change departments) or as multiple data per employee (e.g. one set of data for each course that was attended).

The 'Employee Information System' includes a report generator for flexible data retrieval. Reports can be applied to either all or a selection of the data. Furthermore the order of the lines and the fields to be displayed can be changed.

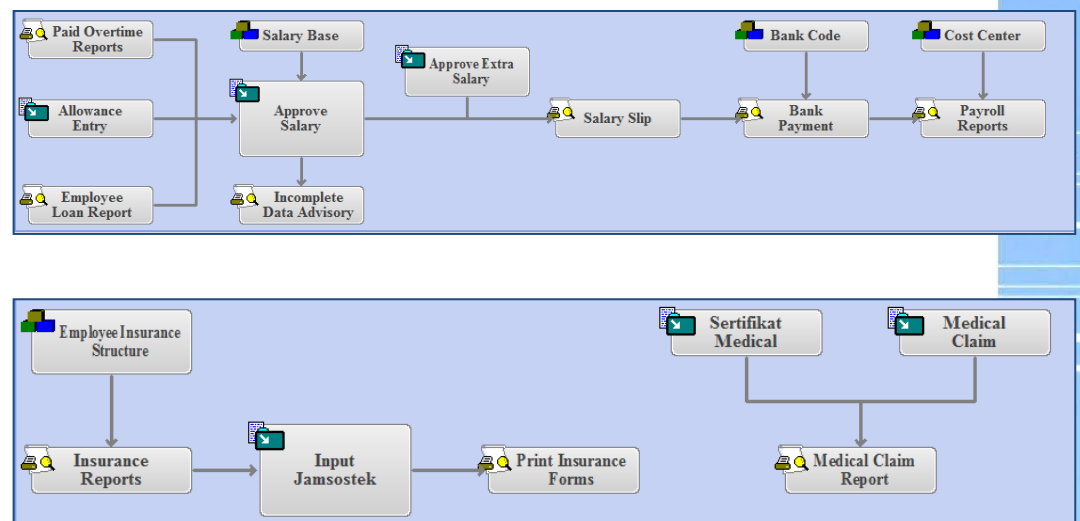
Leave and Attendance Control

Leave and attendance data is relevant for calculating salary items such as overtime, transport incentive and leave deduction. The information can also be used to analyze employee absence and for statistical reports.

Check Clock

The leave and attendance module can be extended to use automatic data collection with a fingerprint or card reader. The data from the reader is then compared to previous entered leave, overtime and shift schedules. Based on the instant exception report immediate action can be taken.

The main task of the HRD modules is the calculation of the periodic payroll. Employee salaries consist of many separate components that can be automatically calculated using the appropriate module(s), e.g. basic salary, incentives, employee insurance, income tax, etc.



Payroll Calculation

The periodic payroll calculation is a tedious and time-consuming job for the HR officer. JS Systems offers a fully automated system for creating the payroll without losing control over individual payments. The HR officer has the ability to check and implement changes on the calculation for each and every income and deduction per employee.

Since all data is stored by date all previous payment data can be checked easily, even if the employee has already changed salary or left the company.

The payroll modules are protected by a powerful password system. With this system it is possible to set which users are allowed to use which functions. On top of that all reports and data entry screens can be limited such that a user can only see/modify data for predefined departments or positions. E.g. user A is only allowed to see employee salaries until the level operator, not for managers up.

Bank Payment

This module is complemented by an export function for automatic payment through the following banks: 'BCA' and 'Bank Mandiri'. Other banks are available on request.

Payroll Calculation

Bank Payment

Medical Claim

Employee Insurance Calculation

Employee Account Receivable

Production & Sales Incentive

Employee Insurance Calculation

The nationwide employee insurance system is based on a fixed percentage of the employee's basic salary (e.g. 'Jamsostek') or it can be a fixed amount depending on the marital status (e.g. 'Askes'). Multiple systems of calculation (insurance packages) are supported by this module. During the payroll calculation the correct package for each employee is automatically calculated.

This module automatically separates the total amount in the three components required for the correct income tax calculation.

Production and Sales Calculation

The calculation of incentives should be tailor-made according to the applicable regulations in your company. JS Systems uses a proprietary 4 GL language for quick and less error-prone programming of the algorithms. The results are automatically transferred to the monthly/weekly payroll.

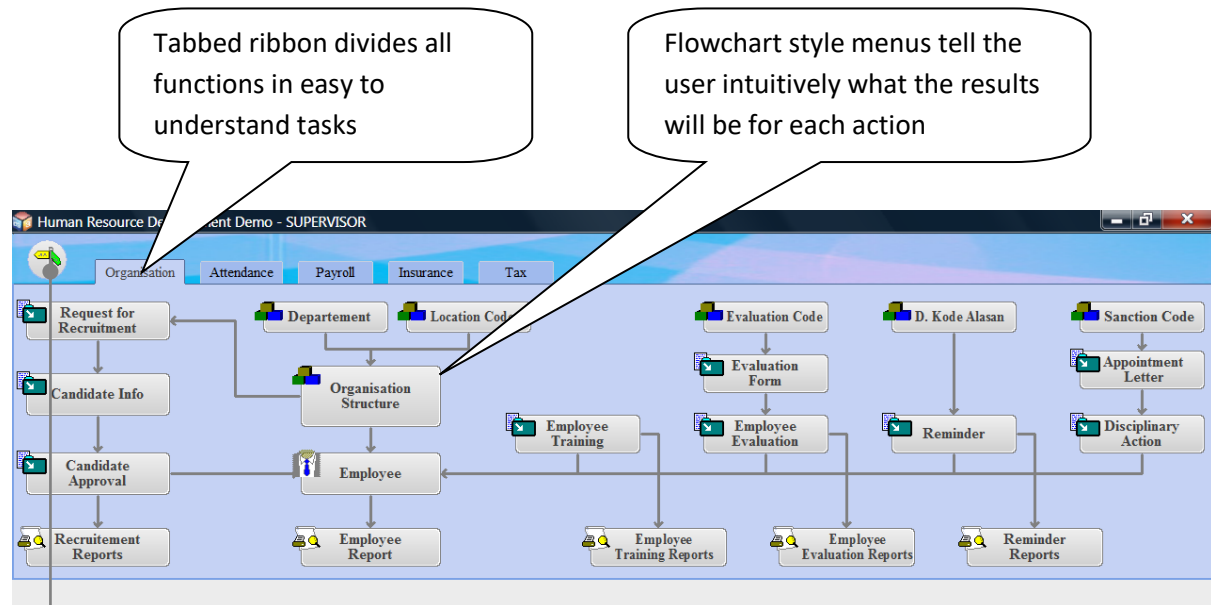
Employee Account Receivable

This module is used to register employee loans and the terms of repayment. The monthly/weekly salary will automatically be deducted according to the system chosen. This module can also be used to enter one-time deductions for a (group of) employee's which will be deducted from the indicated salary.

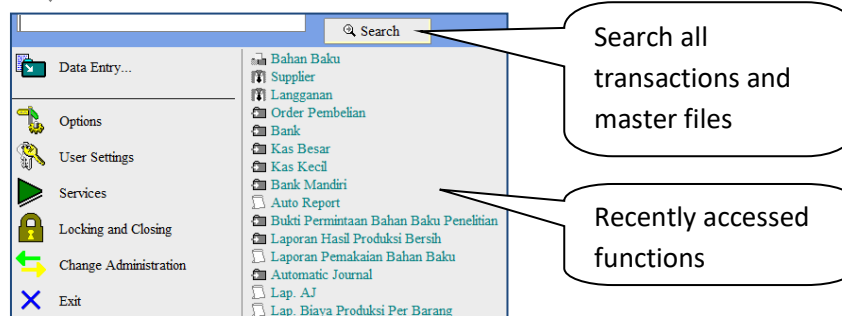
Medical Claim

Medical claims by employees are entered in the system. Claims are checked limited by the company regulations and may be subject to approval before payment.

JS Systems has developed a screen layout based on 15 years of experience in implementing systems and training users. The design uses the latest paradigms and is very intuitive for new users.



Additional functions are available through the menu button



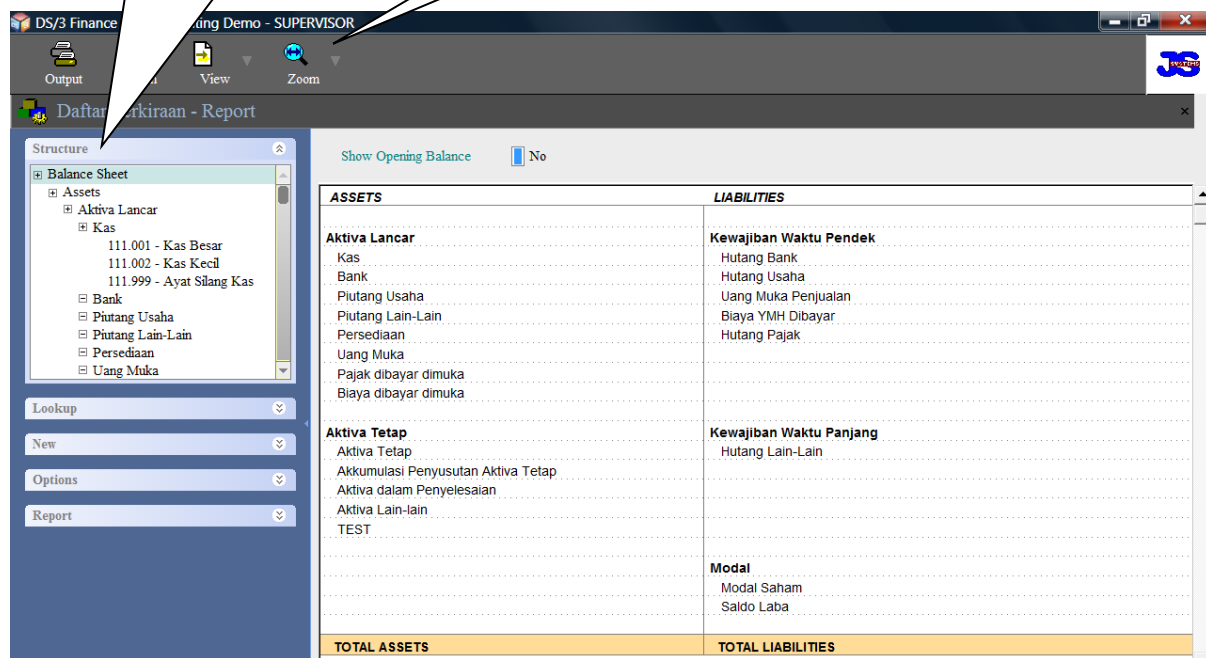
Product Features

Modern User Interface

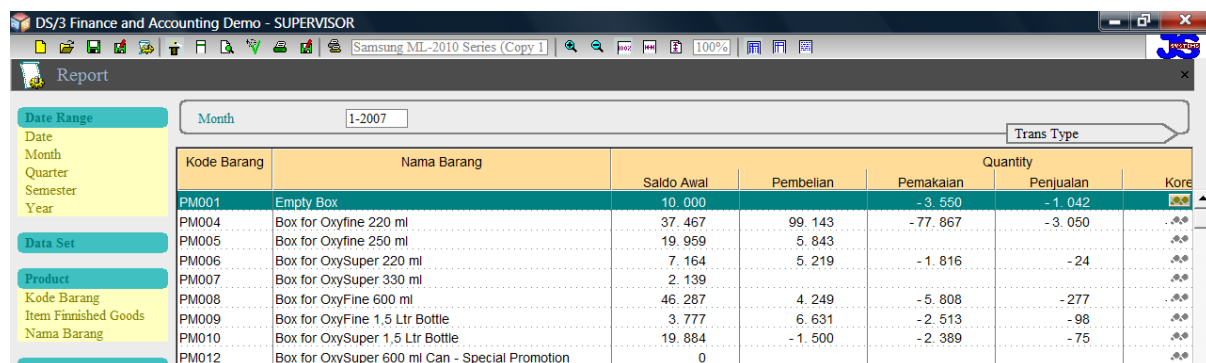
Data-entry screens are designed to have all possible actions for one type of data in a single screen. This makes work more efficient and more intuitive.

The navigation pane lets you easily find the data and action you need.

The toolbar has buttons for all possible actions on the data shown.



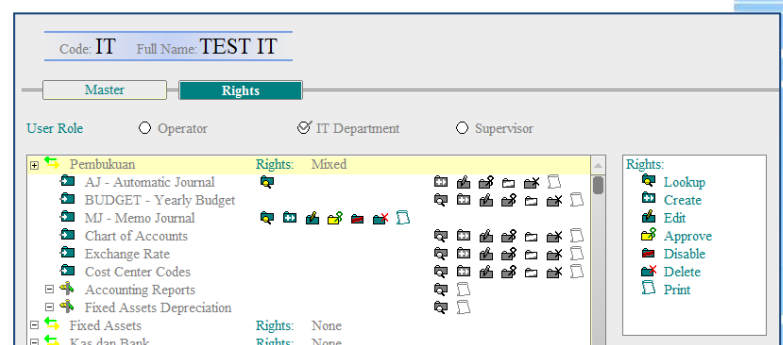
You can create your own additional reports in addition to the standard reports and the ones created by our system engineers. The report generator uses simple drag-and-drop actions for changing columns, selection criteria, etc.



Security and reliability means giving the right people access to and control over the right data in a timely manner. At JS Systems we have identified five main areas:

1. Access Security
2. Traceability of user actions
3. Traceability of reported data
4. Protection against hardware failures
5. Data lifecycle control & change management

Access security can be set for each user by data type and action. Where required the data type might be divided further. E.g. one HR officer may see salaries up to the level of foreman, but not for supervisors and office staff.



Voucher No.: MJ/0029/I/07 Page: 29

Date: 31-01-2007

General Voucher Accounting **History** Record Details

#	Date	Time	Log Information	Details
1.	26-08-08	14:46	Modified	SE: DINA
2.	28-08-08	14:48	Modified	User: SUPERVISOR -
			(Booking)	Book : MJ Interval : 1-2007 Number : 29
			(Journal)	Book : MJ Interval : 1-2007 Number : 29 Sub : 0 Line : 220 Account : 3.001 MA -> 3.001 Mo

Traceability of user actions is achieved through a freely searchable change log. It is possible which data was edit by certain user at a certain computer at a certain time or you can view all changes for a single transaction or master file record.

5. Lifecycle control & change management (revision, closing, locking, archiving)

Product Features

Advanced Security & Reliability

Traceability of reported data is build in at each report and is easily accessed by clicking on the trace icon at the end of the line.

Laporan Akuntansi - Trial Balance Income/Expenses of January 2007

Bulan: 1-2007
[Worksheet] [Nilai 0] [No]

URAIAN	SALDO AWAL		MUTASI		SALDO AKHIR	
	Debet	Kredit	Debet	Kredit	Debet	Kredit
411.000 Penjualan						
411.001 Penjualan Lokal	0,--		0,--	2.045.748.978,--		2.045.748.978,--
Jumlah Penjualan	0,--	0,--	0,--	2.045.748.978,--	0,--	2.045.748.978,--
412.000 Retur Penjualan						
412.001 Retur Penjualan	0,--		8.520.910,--	0,--	8.520.910,--	
Jumlah Retur Penjualan	0,--	0,--	8.520.910,--	0,--	8.520.910,--	0,--
413.000 Potongan Penjualan						
413.001 Potongan Penjualan Lokal						

RETUR PENJUALAN

Bulan: 1-2007
Perkiraan: 412.001

Tgl.	Buku-Hal	No. Bukti	Kode Brg	Uraian	Perk. Lawan	Qty	Harga Satuan	Debet	Kredit	Saldo
FORWARD BALANCE										
							0			0,--
03-01-07	RETJUAL-1	RJ/0004/I/07	FG019	White Label 250 ML	113.001	1	8.374,--	8.374,--		8.374,--
03-01-07	RETJUAL-1	RJ/0004/I/07	FG029	Special Order 220 ml	113.001	2	8.000,--	16.000,--		24.374,--
03-01-07	RETJUAL-2	RJ/0005/I/07	FG019	White Label 250 ML	113.001	7	8.374,--	58.618,--		82.992,--
03-01-07	RETJUAL-2	RJ/0005/I/07	FG029	Special Order 220 ml	113.001	1	8.000,--	8.000,--		90.992,--
03-01-07	RETJUAL-5	RJ/0003/I/07	FG024	OxyBest 220 ml	113.001	2	6.750,--	13.500,--		104.492,--
04-01-07	RETJUAL-3	RJ/0007/I/07	FG003	Cylinder White Label 19 Ltr	113.001	5	3.750,--	18.750,--		123.242,--
04-01-07	RETJUAL-4	RJ/0006/I/07	FG012	OxySuper 220ml	113.001	6	7.700,--	46.200,--		169.442,--
								32.000,--		201.442,--
								3.750,--		205.192,--
								55.300,--		260.492,--

No. R. Jual: RJ/0004/I/07 Page: 1

Date: 03-01-2007
Customer: 0033 Wahyudi No. Faktur: 0001/CTN/VII/06
Salesman: No. SJ
Jatuh Tempo: 02-02-07

#	Perk.	Kode Barang	Uraian	Dos	Harga Satuan	Total
1	412.001	FG019	White Label 250 ML	1	8.374	8.374
2	412.001	FG029	Special Order 220 ml	2	8.000	16.000

Protection against hardware failures can be achieved by automatic backup and rapid restore or by constantly duplicating the data to a backup server. Both scenarios are supported by the JS Systems software.

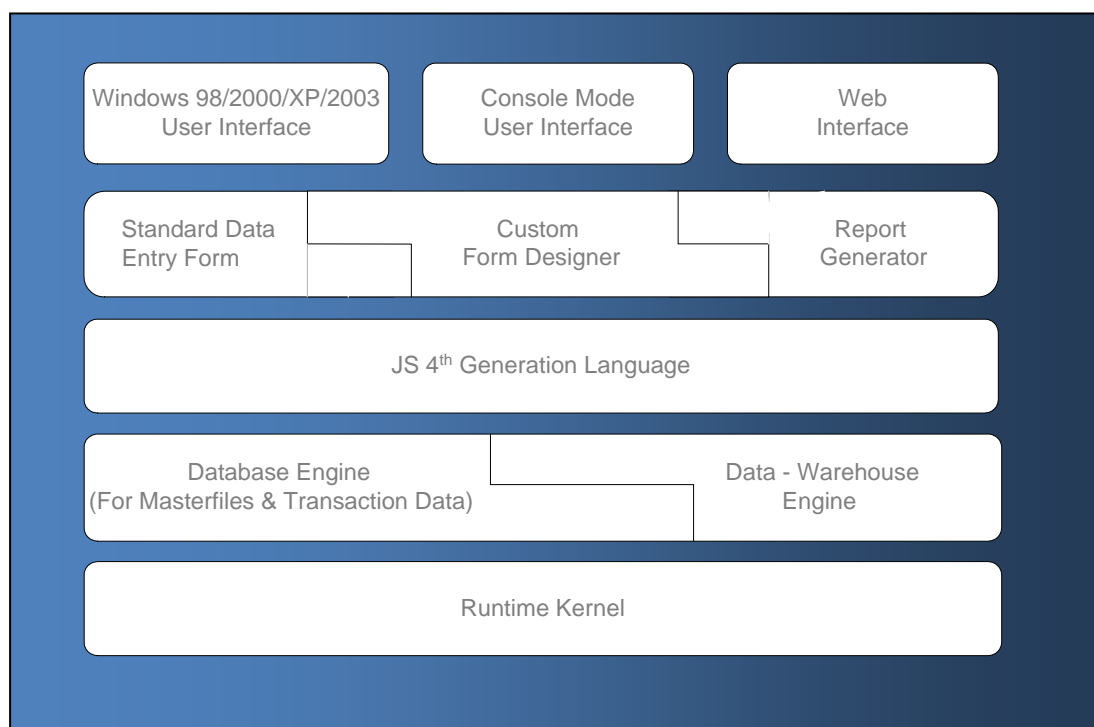
Data lifecycle control & change management are very advanced subjects which normally only come into play after 3 to 10 years of continuous use. Since our software has been in use for more than 15 years at certain companies JS Systems fully understands this issue and supports change management for all master files. Also old transaction data can be separated from the active data (archived) to reduce the size of the active data and prevent decrease of the access speed over time.

Investment in business software is in fact a long term partnership and it is therefore important that the system can be used for a long time and is adaptable to both technological changes and new business developments.

JS Systems was founded in 1994 and is one of the longest continuously operating business software companies in Indonesia. In this time we have seen many changes in technology, such as the move in operating systems from Dos to Windows and recently Linux. Also new database engines are supported. JS Systems has been able to adapt continuously through our modular designed platform called DS/3. Even early customers have been able to upgrade smoothly to the latest technology without losing any data or settings.



DS/3 PLATFORM SOLUTION



DS/3 Conceptual Design

Product Features

Future Proof Design

In the DS/3 platform settings of business rules, forms and rules are completely separated from technological issues. It is therefore possible to upgrade to a new version of the platform or a different operating system / database system without any additional programming.

The DS/3 Platform has many out-of-the-box advantages:

- Open Source Settings
- Traceability of transactions
- Document Management
- Proactive Reporting
- Data Warehouse
- User Friendly

Currently JS Systems supports the following operating systems and database engines:



Software from JS Systems is a safe investment:

- Established company with a large local customer base
- Future proof software
- Comprehensive list of modules
- Professional management



PT. Jaya Sentosa Sistimindo

Call center: 031 848 0307

E-mail: Info@jssystem.com

Http: www.jssystem.com

Surabaya Office

Jl. Tenggilis Tengah I/48 (blok Q-10)